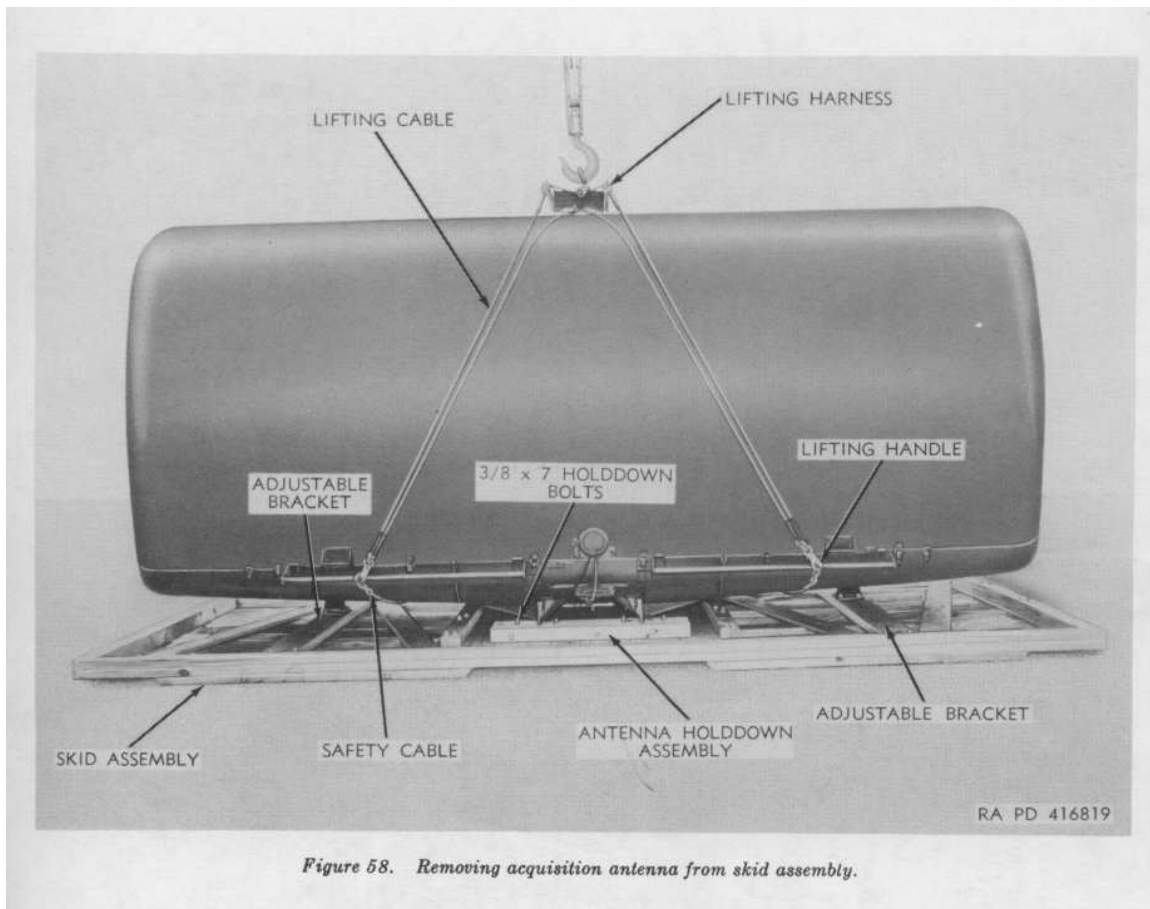


THOUGH THE NIKE MISSILE SITES IN THE UNITED STATES WERE PERMANENT INSTALLATIONS, THE MISSILE SYSTEM ITSELF WAS DESIGNED TO BE A SEMI-MOBILE UNIT. THE SEMI-MOBILE SYSTEMS INCORPORATED MOBILE LAUNCHERS AND READY ROUND TRANSPORTERS, AS WELL AS TRAILER MOUNTED GENERATORS AND HIPAR ANTENNA UNITS. THE LOPAR ANTENNA WAS NOT MODIFIED FOR MOBILE USE, IT WAS SIMPLY DISASSEMBLED. THERE WAS A SPECIAL TRAILER TO CARRY THE LOPAR REFLECTOR, OR A STRETCHED 2 ½ TON TRUCK WAS ALSO USED. THE LEGS AND RADAR PEDESTAL PARTS WERE CARRIED IN THE MOBILE ELECTRONIC SHOP. ALL THREE TRACKING ANTENNAS WERE CRADDED INTO THEIR OWN TRANSPORT TRAILERS. THESE TRAILERS WERE DESIGNED TO STAY WITH THE ANTENNA DURING OPERATIONS, OR THE ANTENNA COULD BE COMPLETELY REMOVED FROM ITS TRAILER, AS WAS THE CASE IN THE UNITED STATES. ALL THE VANS, TO INCLUDE THE BATTERY CONTROL VAN, RADAR CONTROL VAN, ELECTRONIC SHOP, ETC. HAD THEIR UNDER CARRIAGES REMOVED FOR PERMANENT INSTALLATIONS, BUT THE UNDER CARRIAGES WERE LEFT ATTACHED FOR A SEMI-MOBILE INSTALLATION.

THE FOLLOWING PICTURES SHOW A LOPAR ANTENNA, IN ITS DISASSEMBLED MAIN PARTS AND FULLY ASSEMBLED. IN ADDITION, A TRACKING RADAR IS SHOW IN ITS TRANSPORT CONDITION AND THROUGH VARIOUS STAGES OF ASSEMBLY.



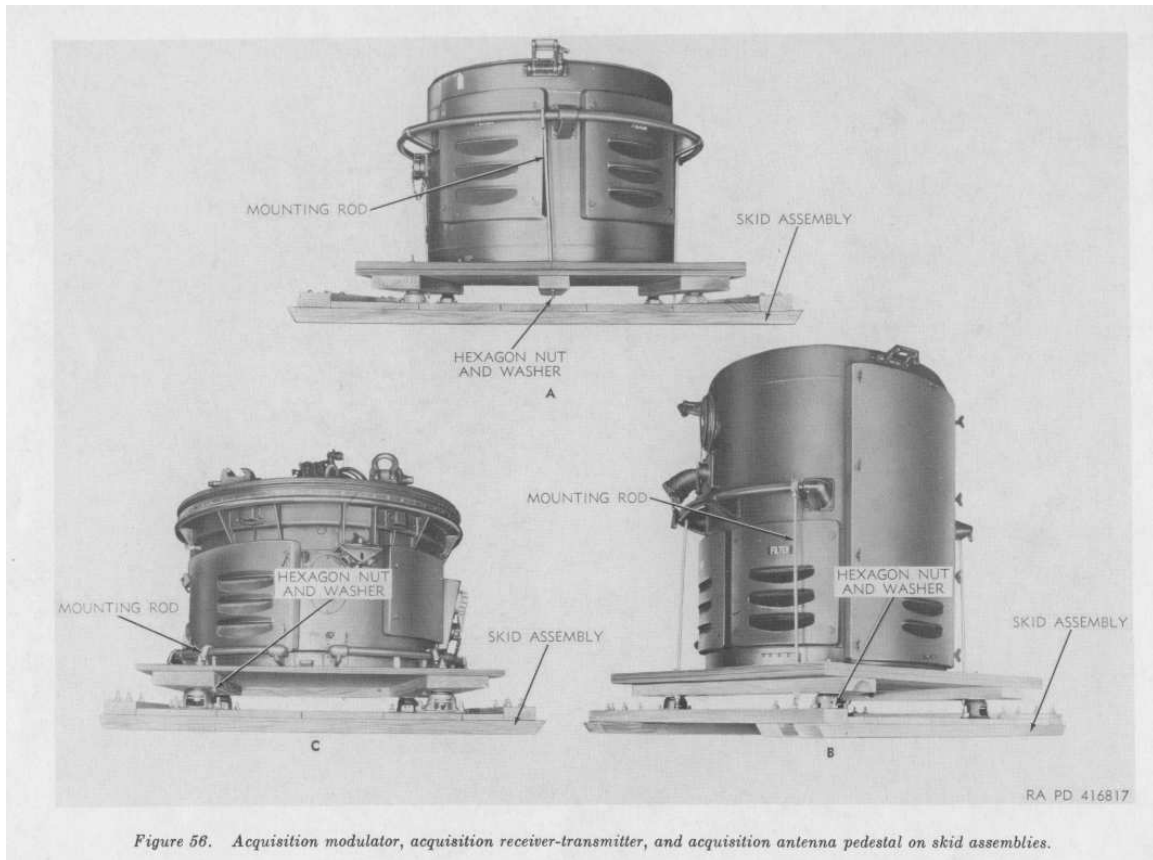


Figure 56. Acquisition modulator, acquisition receiver-transmitter, and acquisition antenna pedestal on skid assemblies.

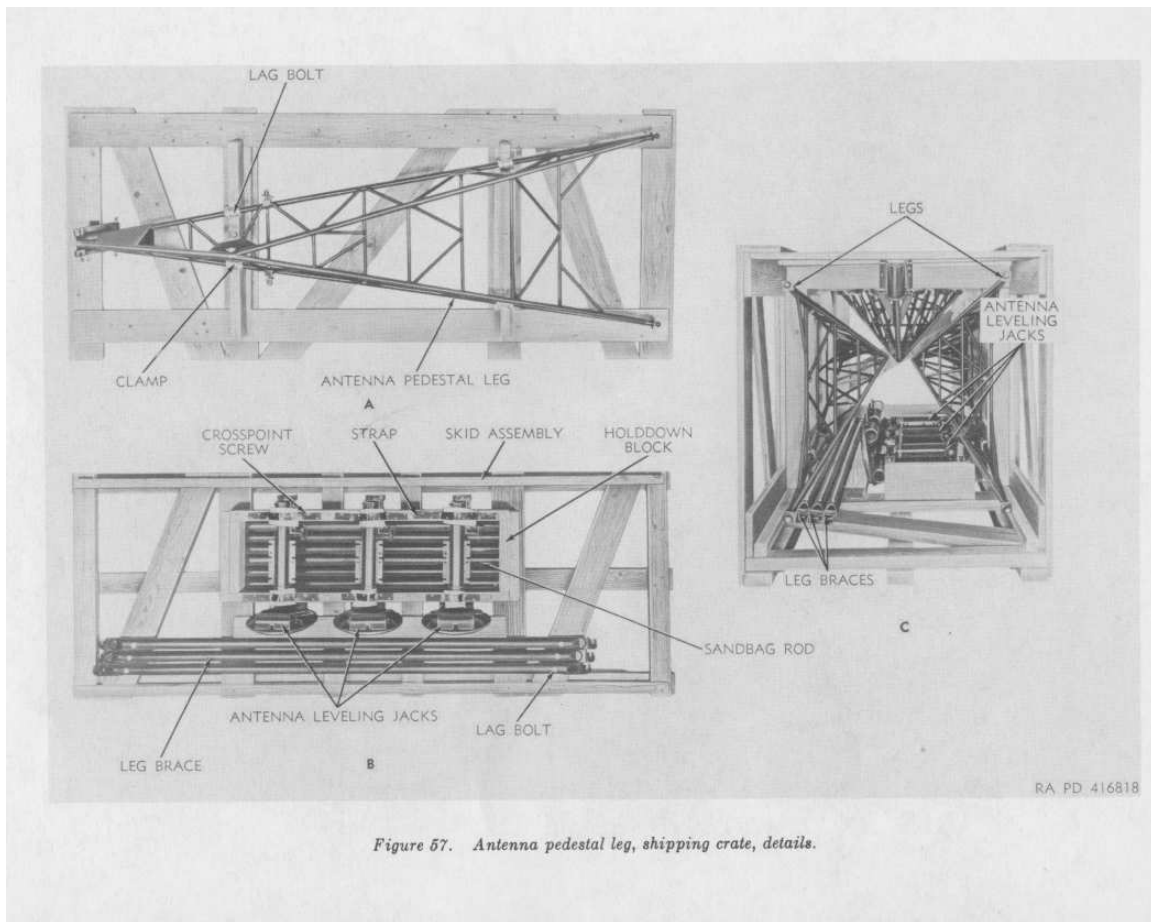


Figure 57. Antenna pedestal leg, shipping crate, details.

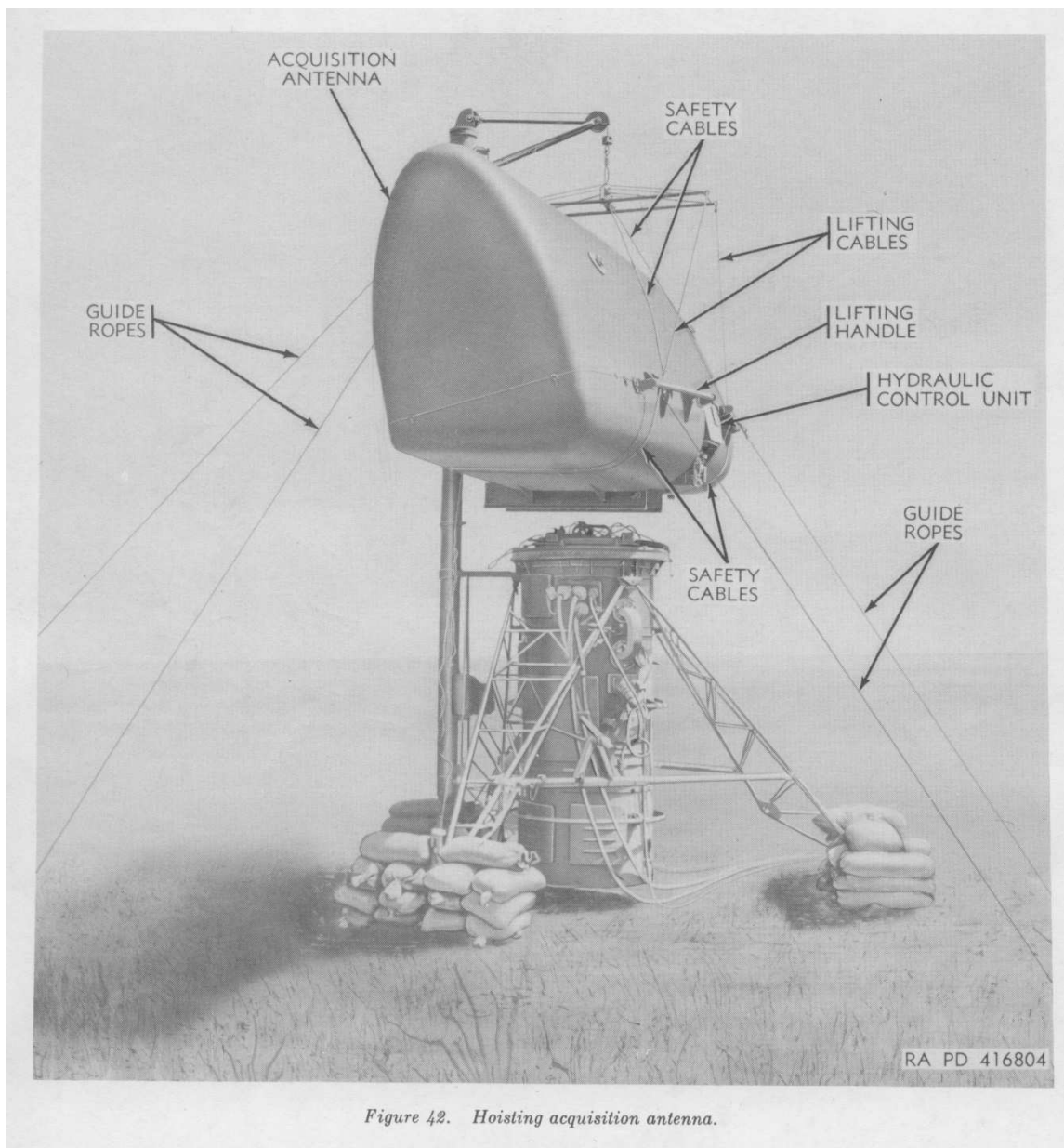
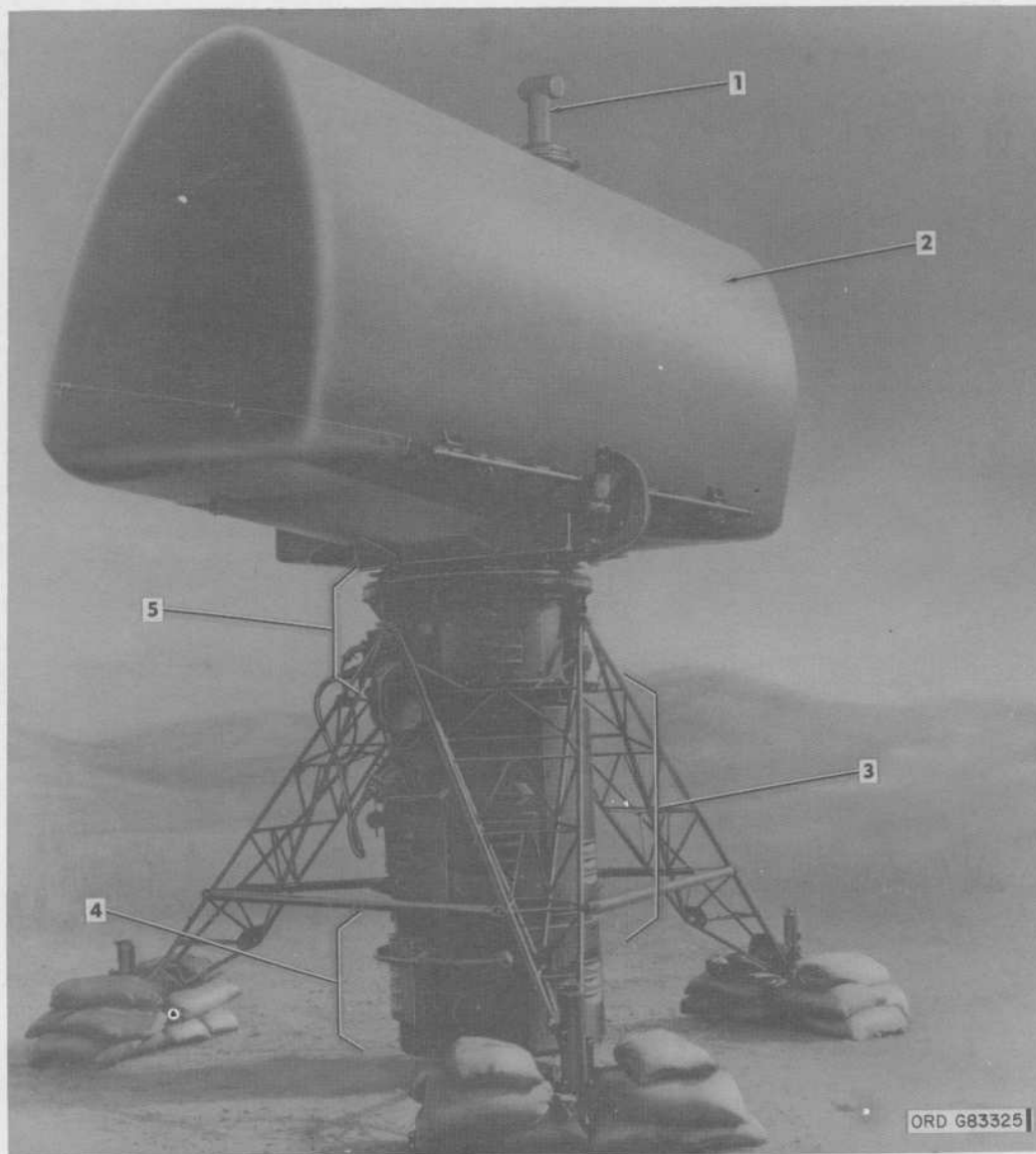


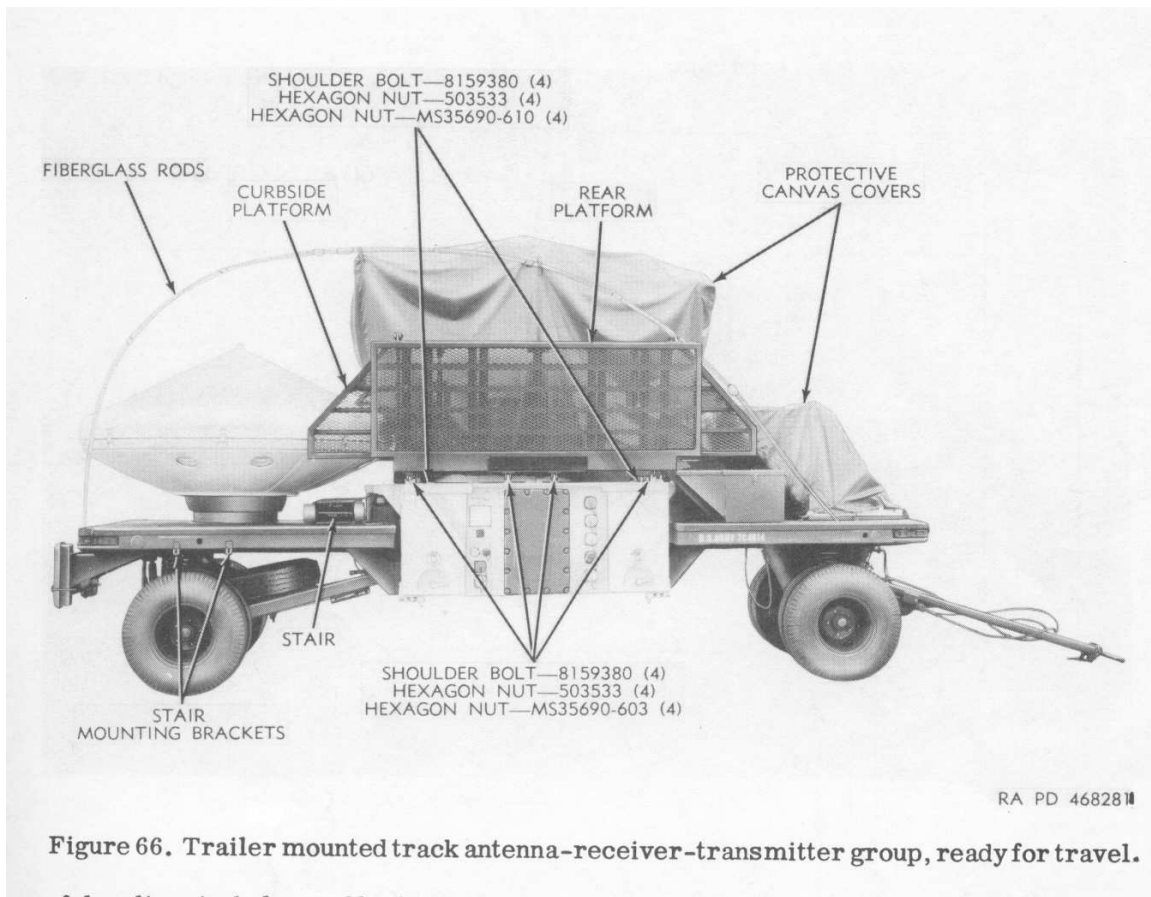
Figure 42. Hoisting acquisition antenna.

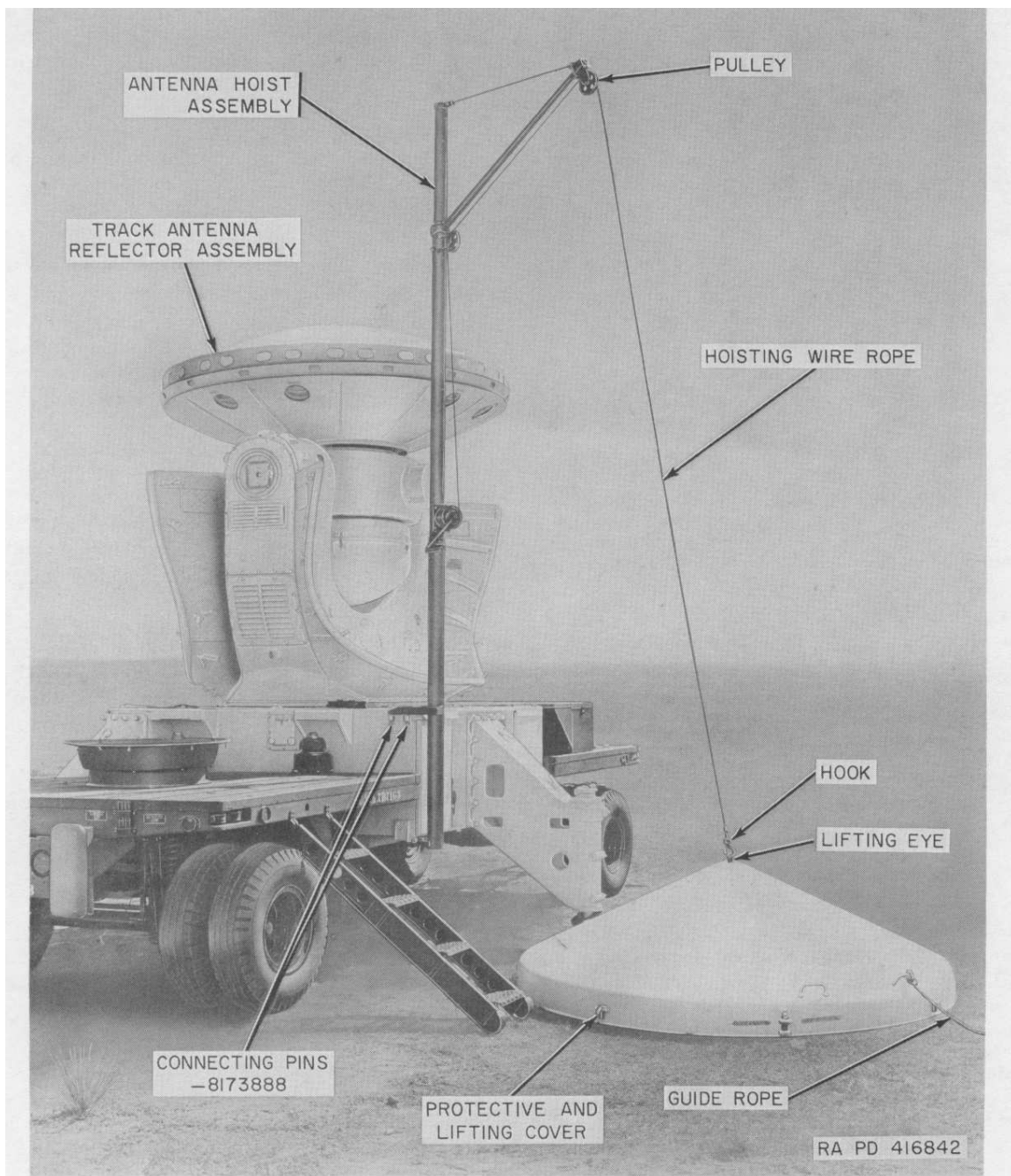


- 1—Auxiliary antenna
- 2—Acquisition antenna
- 3—Acquisition receiver-transmitter

- 4—Acquisition modulator
- 5—Acquisition antenna pedestal

Figure 25.1 (U). Acquisition auxiliary antenna--receiver-transmitter group with auxiliary antenna subassembly.





*Figure 88 (U). Protective and lifting cover, removed.*



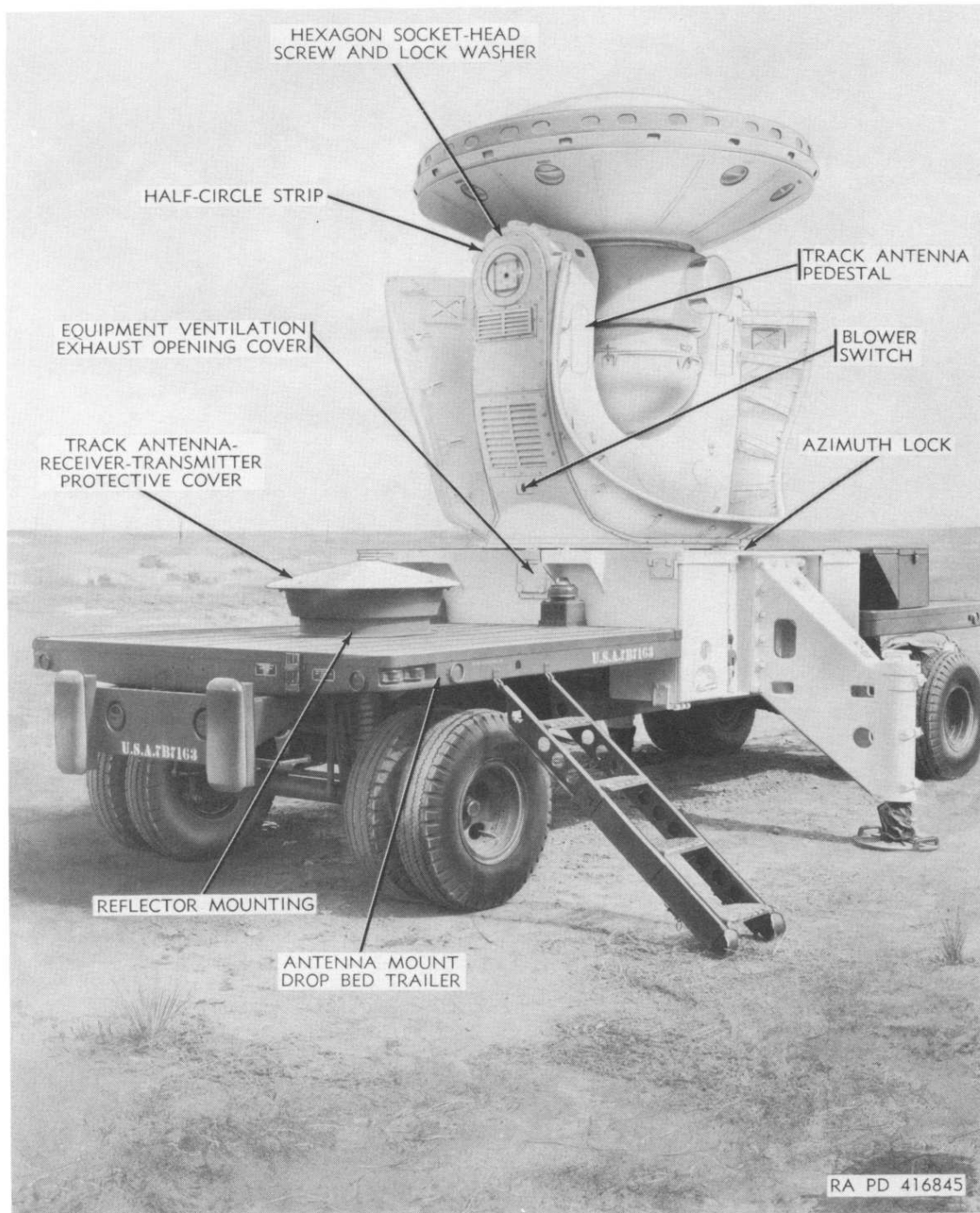
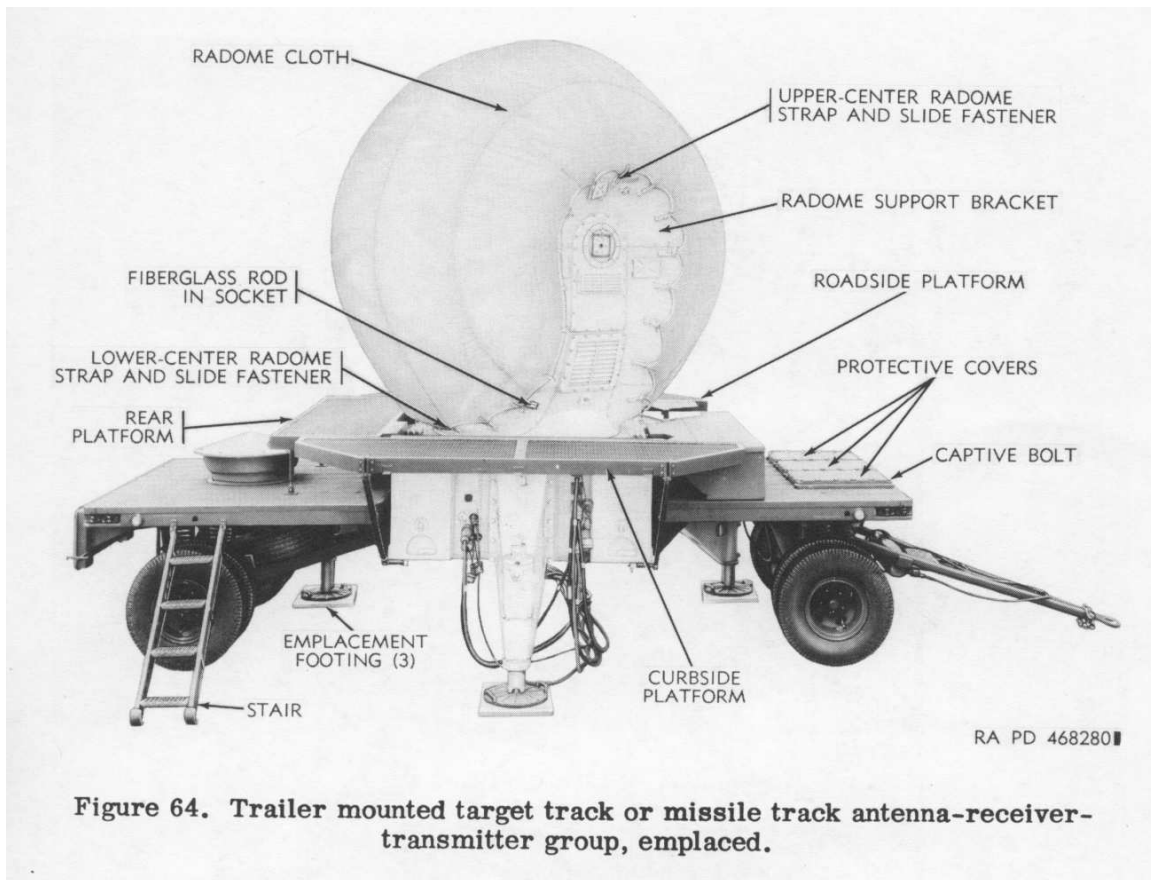
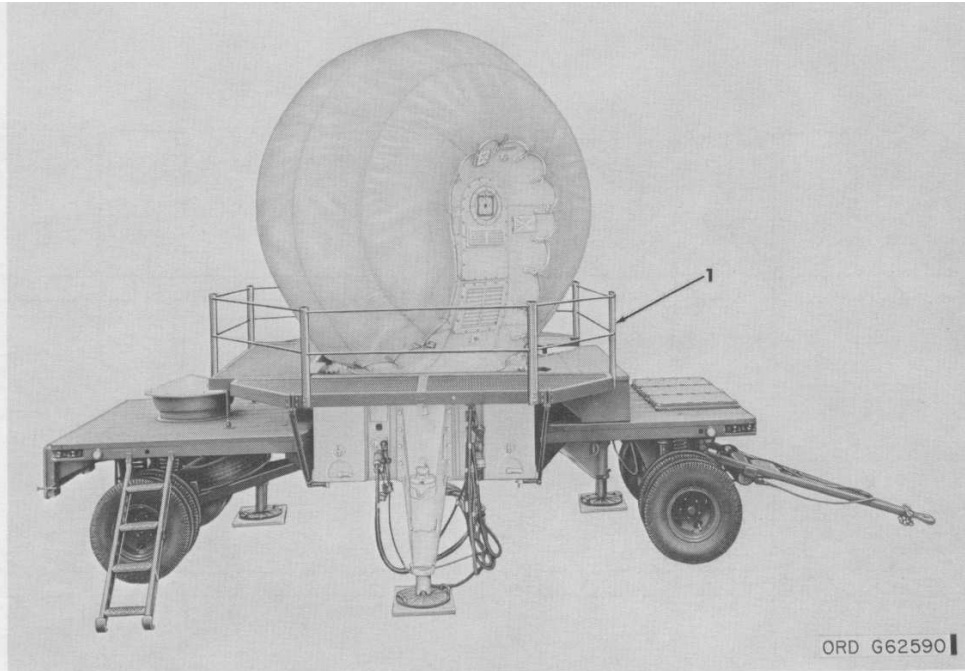


Figure 91. Track antenna-receiver-transmitter group, partially assembled.



**Figure 64. Trailer mounted target track or missile track antenna-receiver-transmitter group, emplaced.**



1 — Removable tube 8030850

*Figure 85.3 (U). Trailer mounted target track, target range, or missile track antenna-receiver-transmitter group—emplaced.*